



Bathing establishment Fact Sheet

Bathhouse name	ARIZONA
Address	Viale Europa, 25
City	Viareggio (LU)
Contacts	Tel +39 0584391343 - booking@bagnoarizona.com
Website	https://bagnoarizona.com/it/

TESTED BY: [Handy Superabile - Social Promotion Association](#) in summer 2023

Please note The following information refers to the verification date shown at the bottom of each card. **The Association** is not responsible for any significant changes made by the property after the visit.

Summary

Bathing establishment Fact Sheet	1
Arrival at the facility.....	2
Private/public parking.....	2
Pathway from the parking lot to the main entrance	3
Reception.....	4
Bar/restaurant	4
Internal Pathways and common services.....	5
Internal Pathways	5
Toilet and shower accessible to guests with reduced mobility	6
Changing room	8
Beach.....	9
Children's play area	10
Swimming pool	10
Doctors' Offices/Healthcare Facilities	11

Project carried out with the contribution of the



**Presidenza del
Consiglio dei Ministri**
Ministro per la disabilità

Project promoted by



Regione Toscana

Arrival at the facility

Private/public parking

Presence of private parking	YES
Type of private car park	gravel
Presence of parking space reserved for people with disabilities	YES
Public parking nearby	YES
Type of public car park	asphalt
	

Project carried out with the contribution of the



**Presidenza del
Consiglio dei Ministri**
Ministro per la disabilità



	<p>Parking space reserved for the disabled on a gravel surface</p>
--	--

Pathway from the parking lot to the main entrance

<p>Pathway from the car park to the entrance</p>	<p>Flat</p>
<p>There are markers and tactile maps</p>	<p>NO</p>
<p>Usable door/entrance width</p>	<p>more than 90 cm</p>





Reception

Umbrella booking system	<input checked="" type="checkbox"/> Via web <input checked="" type="checkbox"/> By phone <input checked="" type="checkbox"/> On-site
Presence of multilingual staff	Not detected
Presence of plant plan with key to services available	NO
Presence of visuo-tactile map	NO
Bulletin board/information panels at an average height of 130 cm in a well-lit area and font size at least 14 dpi with a contrast ratio greater than 4.5:1	NO
The staff attended training courses on welcoming people with different disabilities	NO

Bar/restaurant

Type of venue	Bar/restaurant
Access to the premises	by ramp length 345 cm width >100 cm slope 6% with handrail on the right
Usable door/entrance width	more than 90 cm
Bar counter	more than 100 cm
Types of tables	with central support that can hinder the approach with the wheelchair
Space underneath the tables from the floor	70 cm
Multilingual menu	Not detected
Menus with large print fonts	NO
Braille menu	NO
Table service for people with disabilities	YES





<p>Availability of gluten-free food</p>	<p><input type="checkbox"/> bread <input type="checkbox"/> pasta <input type="checkbox"/> biscuits <input checked="" type="checkbox"/> ice cream <input checked="" type="checkbox"/> Pre-packaged foods</p>
	
	

Internal Pathways and common services

Internal Pathways

Indicate whether the pathways connecting the entrance to the beach are flat or with ramps in addition to those already described

obstacle-free paths; To reach the toilets you must first pass this ramp in the photo








Toilet and shower accessible to guests with reduced mobility

Number of toilets accessible/usable by guests with reduced mobility	1
Access to the premises	via ramp length 270 cm, width <100 cm, gradient 4 % with handrail on the right
Usable width of the entrance door	90 cm
WC height	50 cm
Open front toilet seat	YES
Support handles	to the right of the toilet
Flexible hand shower at the side of the toilet	NO
Free space on the sides of the toilet	left more than 90 cm right 21 Cm frontal more than 90 cm
Electric doorbell/phone	YES
Washbasin with space underneath for wheelchair	76 cm
Height from the ground on the bottom edge of the mirror	not sufficient for use by a person in a wheelchair






Baby changing table	NO
Accessible shower available for guests with reduced mobility	YES in common with the toilet room
Access to the shower room if separated from the toilet room	Flat
Useful width of the door/entrance gate if separated from the toilet room	>90 cm
	
	
Shower type	open-type
Floor-level shower	YES
Shower chair	wall-mounted folding
Grab bar	YES





Presence of shower head or ups and downs	Ups and downs with the lowest point reachable by a seated person
Electric doorbell/phone	NO
	Shower shared with the toilet room equipped with a wall-mounted reclining seat



Changing room

Accessible changing room available for guests with reduced mobility	YES
Access to the premises	via the same ramp to the toilet room: length 270 cm, width 112 cm, slope 4 %
Usable door/entrance width	more than 90 cm
Size of the dressing room	width 160 cm and depth 130 cm
Presence of a cot	NO
Coat rack height from the ground	over 140 cm and not accessible to wheelchair users





Beach

Type of beach	sand
Access to the beach	Flat
Walkway to reach the umbrellas	YES
Type of walkway	PVC
Walkway width	90 cm
	
Removable Platform between the walkway and the umbrella station to facilitate the passage and parking wheelchair	YES
Amphibious beach chair available for helping people with reduced mobility to enjoy swimming (owned by the establishment or by association)	YES





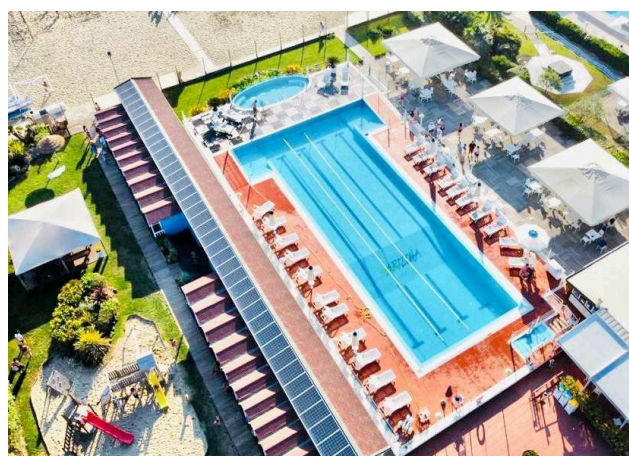
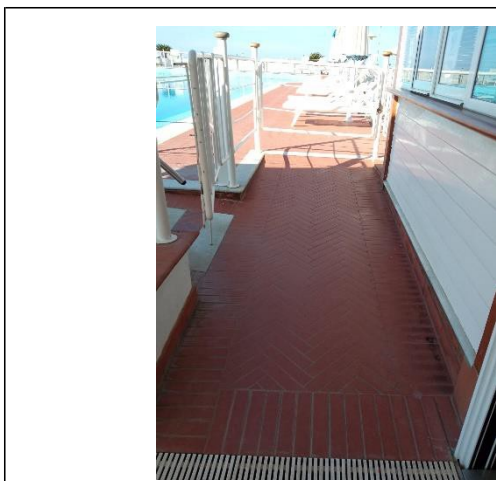
Children's play area

Children's play area	Not detected
----------------------	--------------

Swimming pool

The property has a swimming pool	YES
Access to the swimming pool	via the same ramp that leads to the restaurant 345 cm long, 118 cm wide and 6% slope and then ramp 470 cm long, 123 cm wide and 5% slope (see photo).
Useful width of the entrance gate	more than 90 cm
Access to the pool	via ramp with steps
Bathing aids for guests with reduced mobility	amphibious chair





Doctors' Offices/Healthcare Facilities

Hospitals near the facility	Ospedale Versilia SS 1, 335, 55049 Camaione LU Telephone: 0584 6051
Other Healthcare Facilities	ASL Health District No. 12 Viareggio Piazza Buon Consiglio Viareggio Tel. Phone 0584.6056353 Dialysis service c/o HOSPITAL OF CISANELLO DI PISA Department for

Project carried out with the contribution of the



Project promoted by



Regione Toscana

	dialysis therapy (hemodialysis – peritoneal dialysis) in the period June - September Dialysis Holiday service with availability of n. 6 beds tel. 050 997250 – 997253 – 997256
--	---

TESTED BY: Handy Superabile Social Promotion Association in summer 2023

Project carried out with the contribution of the



**Presidenza del
Consiglio dei Ministri**
Ministro per la disabilità